

## ► Ornamental Fence Hardware



Phone: (813) 988-2628 • Fax (866) 988-3465 • [www.nationwideindustries.com](http://www.nationwideindustries.com) • [fence@nationwideindustries.com](mailto:fence@nationwideindustries.com)



# ► Ornamental Fence Hinges

## ► What would your ideal supplier look like?

### Would they:

- Ship from available stock the same day you order if placed before 12 noon EST
- Have ample stock in multiple warehouses
- Have an efficient & friendly customer service department
- Be a company that consistently achieves the right balance of price & quality
- Use an automotive industry-based quality control system
- Have a broad line of hardware to meet all of your hardware needs

**Nationwide Industries may be your ideal fit.  
Try us and we'll show you what we can do!**

## Cornerstone™ Nylon Hinge

### 4" Self-Closing Hinge

**CH100N-BK Black**

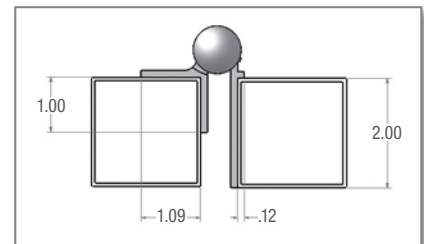
**CH100N-WH White**

- Post and Gate flanges: 1" (W) x 1" (D)
- Produced with durable glass-filled nylon
- .25" Allen wrench **included** for tension adjustment
- Stainless steel screws included
- 20 pair per case @ 19lbs



**New Product!**

Patented



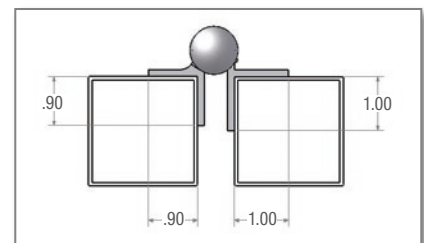
## 4" Self-Closing Aluminum Hinge

**NW093-26 Black**

**NW093-36 Bronze**

**NW093-56 White**

- Post flange: 1/8" (W) x 2" (D)
- Gate flange: 1" (W) x 1" (D)
- Tension adjustment wrench and barrel caps included
- 50 each per case @ 25lbs



**NW093A-26 Black**

**NW093A-36 Bronze**

**NW093A-56 White**

- Post and Gate flanges: 1" (W) x 1" (D)
- Tension adjustment wrench and barrel caps included
- 50 each per case @ 25lbs Also available: 25 pairs with screws

## ► 4" Non Self-Closing Aluminum Hinge

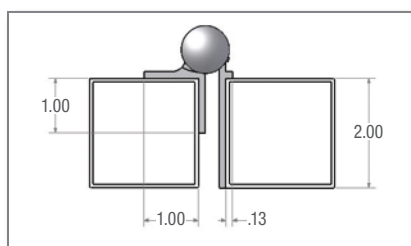
**NW149-26 Black**

- Post and Gate flanges: 1 3/16" (W) x 1 3/16" (D)
- 100 each per case @ 39lbs

Also available: 25 pairs with screws



## ► Ornamental Fence Hinges



### ► 5" Self-Closing Aluminum Hinge

**NW093J-26** Black

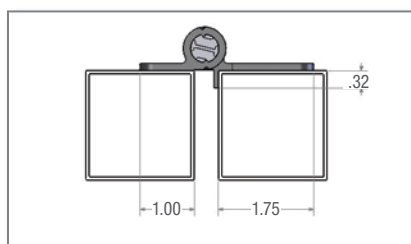
**NW093J-36** Bronze

**NW093J-56** White

- Post flange: 1/8" (W) x 2" (D)
- Gate flange: 1" (W) x 1" (D)
- Also includes shim for wall-mount applications
- Tension adjustment wrench and barrel caps included
- 50 each per case @ 32lbs *Also available: 25 pairs with screws*



Patented



### ► 5 3/4" Self-Closing Aluminum Hinge

**NW094-BK** Black

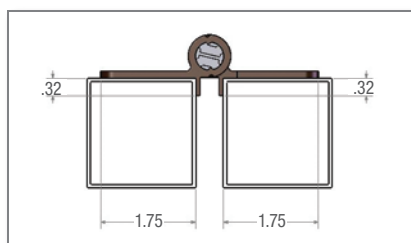
**NW094-BZ** Bronze

**NW094-WH** White (special order only)

- Post flange: 1 3/4" (W) x 5/16" (D)
- Gate flange: 1" (W)
- Adjustable spring tension
- 100 each per case @ 55lbs *Also available: 25 pairs with screws*



Patented



**NW094L-BK** Black

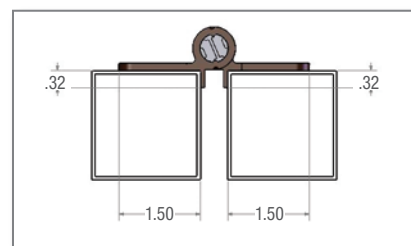
**NW094L-BZ** Bronze

**NW094L-WH** White

- Post and Gate flanges: 1 3/4" (W) x 5/16" (D)
- Adjustable spring tension
- 100 each per case @ 61lbs *Also available: 25 pairs with screws*



Patented



### ► 5 3/4" Self-Closing Aluminum Hinge (cont.)

**NW096-BK** Black

**NW096-BZ** Bronze

**NW096-WH** White

- Post and Gate flanges: 1 1/2" (W) x 5/16" (D)
- Adjustable spring tension
- 100 each per case @ 55lbs *Also available: 25 pairs with screws*



Patented

**NW095-BK** Black

**NW095-BZ** Bronze

**NW095-WH** White

- Post and Gate flanges: 1 1/2" (W) x 1 1/2" (D)
- Adjustable spring tension
- 50 each per case @ 42lbs *Also available: 25 pairs with screws*

### ► Heavy Duty Aluminum Hinge

**Non Self-Closing**

**NW216-26** Black

**NW216-36** Bronze

**NW216-56** White

- Post flange: 5" (H) x 3 1/4" (W) x 3 1/4" (D)
- Gate flange: 2 3/8" (H) x 1 5/16" (W) x 2" (D)
- Gate flange will accommodate both 2" and 1" gate frame
- 20 each per case @ 34lbs



**NW216N-26** Black

**NW216N-36** Bronze

**NW216N-56** White

- Same as NW216s above but fits only a 2" gate frame

► **Call Us: (813) 988-2628 or**

► **Email Us: [fence@nationwideindustries.com](mailto:fence@nationwideindustries.com)**

## ► Ornamental Fence Latches

### ► OrnaMag Magnetic Gate Latch

**OM-L-BK** Black  
**OM-L-WH** White  
**OM-L-BZ** Bronze

Elegant look with  
magnetic closing power!

New  
Product!

- Accommodates up to 2" gate post profile
- Key locking
- Reversible for right-hand or left-hand use
- Stainless steel screws included
- 10 each per case



Patented

**OM-BK** Black

**OM-WH** White

**OM-BZ** Bronze

- Same as OM-Ls above but **without** key lock

### Keystone Advantage™ Series

All Keystone™ Latches  
available in Nylon or Metal

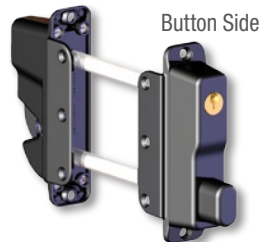
Slim Profile!

#### Two-Sided Lockable Latch

**KLADV-P2-BK** Black (Nylon)

**KLADV-P2-WH** White (Nylon)

- Locking feature accessible from both sides
- Reversible for right-hand or left-hand use
- Glass-filled nylon housing
- Thumb release button on one side, gravity latch lever on opposite side
- .38" Stainless steel strike bar
- Stainless steel screws included
- 20 each per case @ 23lbs

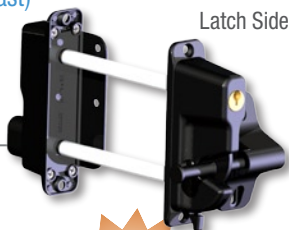


Patented

**KLADV-M2-BK** Black (Zinc diecast)

**KLADV-M2-WH** White (Zinc diecast)

- Same as KLADV-P2 but with zinc die cast housing
- 20 each per case @ 48lbs



Latch Side

#### One-Sided Lockable Latch

**KLADV-P1-BK** Black (Nylon)

**KLADV-P1-WH** White (Nylon)

- Same as KLADV-P2 above but with locking (gravity latch lever) on one side
- 20 each per case @ 17lbs

New  
Metal Design!

**KLADV-M1-BK** Black (Zinc diecast)

**KLADV-M1-WH** White (Zinc diecast)

- 20 each per case @ 31lbs



One-Sided  
Lockable Latch

### ► The Protector®

#### Magnetic Pool Safety Latch

**NW276NE-26** Black

**NW276NE-56** White

- 19.5" latch height meets pool access requirements when properly installed
- Horizontal and vertical adjustment up to 2"
- Reversible for right-hand or left-hand use
- Easy-grip release knob
- Key cylinder is at a 45° angle for easy access
- Extruded aluminum body with glass-filled nylon components
- Packaged in heavy-duty poly bag with stainless screws
- 20 each per case @ 30lbs



### ► The Protector® Jr.

#### Magnetic Pool Safety Latch

**NW308-26** Black

**NW308-56** White

- Same as NW276NE but used for applications with taller fence profiles
- Total latch height is 10"
- 20 each per case @ 23lbs



### ► Solid Brass Handle Latch

**NW-GL01-BRL** Black (housing)

**NW-GL02-BRL** White (housing)

- Accommodates up to 2" gate frame profile
- Pad-lockable keeper
- Reversible for right-hand or left-hand use
- Stainless steel screws included
- 25 each per case @ 55lbs

### ► Stainless Steel Gravity Latch

**NW38204SSB** Black

**NW38204SSW** White

**NW38204SSM** Mill

- Pad-lockable on one side
- Stainless steel screws included
- 50 each per case @ 28lbs





## ► Drop Rods and Post Caps

### ► 24" Heavy Duty Stainless Steel Drop Rod

**NW38305-24SS Mill**

**NW38305-24SSB Black**

**NW38305-24SSW White**

- 5/8" diameter
- Screws included
- Dual guides
- Pad-lockable
- Retention-ears for theft prevention
- 20 each per case @ 44lbs



### ► Modern Post Cap – Press Fit

**All Available with Custom Logo with Minimum Orders**

**NW230NL-SBL Mill**

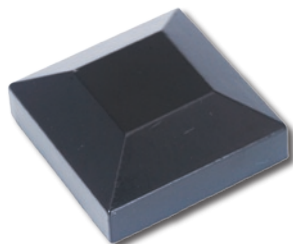
**NW230NL-26 Black**

**NW230NL-56 White**

- 2" Aluminum die cast
- 250 each per case @ 22lbs

**NW240NL-SBL Mill**

- 2.5" Aluminum die cast
- 300 each per case @ 41lbs



### ► Traditional Post Cap – Press Fit

**NW220-MI Mill**

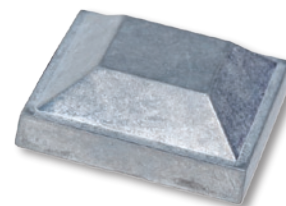
- 2" Zinc die cast

- 250 each per case @ 39lbs

**NW244-MI Mill**

- 2.5" Zinc die cast

- 120 each per case @ 25lbs



**NW6099-MI Mill**

**NW6099-BK Black**

**NW6099-BZ Bronze**

**NW6099-WH White**

- 2" Aluminum die cast

- 250 each per case @ 22lbs

**NW6098-SBL Mill**

**NW6098-BK Black**

**NW6098-BZ Bronze**

**NW6098-WH White**

- 3" Aluminum die cast

- 100 each per case @ 23lbs

**NW6084-MI Mill**

- 4" Aluminum die cast

- 100 each per case @ 35lbs

### ► Ball Caps

**NW242-SBL Mill**

- 2" Aluminum die cast – screw set
- 72 each per case @ 41lbs

**NW242A-MI Mill**

- 2" Aluminum die cast – press fit
- 72 per case @ 41lbs

**NW290-SBL Mill**

- 2.5" Aluminum die cast – press fit
- 80 each per case @ 43lbs

**NW6097-SBL Mill**

- 3" Aluminum die cast – press fit
- 50 each per case @ 53lbs



► **Nationwide Industries may be your ideal fit.  
Try us and we'll show you what we can do!**

## ► Aluminium Die Cast – External Screw Set

### NW233-MI

- 5/8" Triad style square base
- No ball-tip
- 300 each per case @ 41lbs

### NW235-SBL

- 5/8" Quad style square base
- With ball-tip
- 300 each per case @ 44lbs

### NW234-MI

- 3/4" Triad style square base
- No ball-tip
- 300 each per case @ 43lbs

### NW236-SBL

- 3/4" Quad style square base
- With ball-tip
- 300 each per case @ 43lbs



Triad

Quad

## ► Aluminium Die Cast – External Press Fit

### NW233PF-SBL

- 5/8" Triad style square base
- No ball-tip
- 300 each per case @ 43lbs

### NW235PF-SBL

- 5/8" Quad style square base
- With ball-tip
- 300 each per case @ 45lbs

### NW234PF-SBL

- 3/4" Triad style square base
- No ball-tip
- 300 each per case @ 51lbs

### NW236PF-SBL

- 3/4" Quad style square base
- With ball-tip
- 300 each per case @ 51lbs



Triad

Quad

- **Call Us: (813) 988-2628 or**
- **Email Us: [fence@nationwideindustries.com](mailto:fence@nationwideindustries.com)**
- **Visit our Web: [www.nationwideindustries.com](http://www.nationwideindustries.com)**

## ► Zinc Die Cast – External Press Fit

### NW213-MI

- 5/8" Triad style square base
- 250 each per case @ 42lbs

### NW212-MI

- 5/8" Quad style square base
- 250 each per case @ 42lbs

### NW250-MI

- 3/4" Triad style square base
- 250 each per case @ 46lbs

### NW249-MI

- 3/4" Quad style square base
- 250 each per case @ 49lbs

### NW246-MI

- 1" Triad style square base
- 200 each per case @ 41lbs

### NW245-MI

- 1" Quad style square base
- 200 each per case @ 41lbs

### NW252-MI

- 5/8" x 1" Triad style rectangular base
- 250 each per case @ 45lbs

### NW251-MI

- 5/8" x 1" Quad style rectangular base
- 200 each per case @ 38lbs



Triad

Quad

All Zinc die cast Finials come with ball-tip.

\* Mill Finish on all Finials

## ► Have Questions? Need Answers?

**Are your needs custom, replacement, or current stock?**

- Call Us: (813) 988-2628
- Fax Us: (866) 988-3465
- Email Us: [fence@nationwideindustries.com](mailto:fence@nationwideindustries.com)
- Visit our Web: [www.nationwideindustries.com](http://www.nationwideindustries.com)

## ► Ornamental Brackets



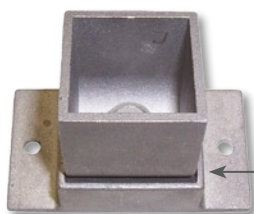
### ► Square Dual Flange Wall Mount Bracket

#### **NW280-SBL Mill**

- 1" x 1"
- Aluminum die cast
- 500 per case @ 44lbs

#### **NW243-SBL Mill**

- 1 5/8" x 1 5/8"
- Aluminum die cast
- 240 each per case @ 47lbs



← Cup swivels in bracket  
to desired angle

### ► Adjustable Dual Flange Wall Mount Bracket

#### **NW6075-SBL Mill**

- 1 1/8" x 1 1/8"
- Aluminum die cast
- Adjustable for angle or rake rails
- 100 each per case @ 20lbs

#### **NW6075A-SBL Mill**

- 1 3/8" x 1 3/8"
- Aluminum die cast
- Adjustable for angle or rake rails
- 100 each per case @ 29lbs

► **Call Us: (813) 988-2628 or**

► **Email Us: [fence@nationwideindustries.com](mailto:fence@nationwideindustries.com)**

## ► Single Flange Wall Mount Brackets

#### **NW211-MI Mill**

- 1" x 1 1/8"
- Aluminum die cast
- 300 each per case @ 38lbs



#### **NW211A-MI Mill**

- 1 1/4" x 1 1/4"
- Aluminum die cast
- 300 each per case @ 30lbs



#### **NW217-SBL Mill**

#### **NW217-26 Black**

#### **NW217-36 Bronze**

#### **NW217-56 White**

- 1" x 1 1/2"
- Aluminum die cast
- 240 each per case @ 44lbs



#### **NW292-SBL Mill**

- 1 1/2" x 1 1/2"
- Aluminum die cast
- 100 each per case @ 30lbs



## ► Why partner with Nationwide Industries?

### **Because we:**

- Ship from available stock the same day you order if placed before 12 noon EST
- Have ample stock in multiple warehouses
- Have an efficient & friendly customer service department
- Consistently achieve the right balance of price & quality
- Use an automotive industry-based quality control system
- Have a broad line of hardware to meet all of your hardware needs

**Join us, and we'll show you what we can do!**



# ► Ornamental - Fence & Railing Brackets and End Caps

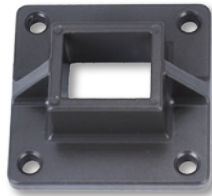
## ► Railing Floor Mount Bracket

**NW273-36** Bronze

**NW273-56** White

**NW273-76** Mill

- Accommodates a 1 7/8" x 1 1/2" post
- Aluminum die cast
- Profile height: 1 3/4"
- Flange: 4 3/8" x 4 3/8"
- 45 each per case @ 41lbs



## ► Floor Mount Bracket

**NW302-26** Black

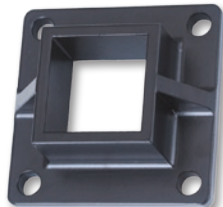
**NW302-36** Bronze

**NW302-56** White

**NW302-MI** Mill

**NW302H-MI** Mill with hole for set screw

- Accommodates a 2" x 2" post
- Aluminum die cast
- Profile height: 1 3/4"
- Flange: 4 3/8" x 4 3/8"
- 50 each per case @ 44lbs



## ► Mushroom Single Flange Mount Bracket

**NW270-36** Bronze

**NW270-56** White

**NW270-76** Mill

- Accommodates a 1 5/8" x 2 5/8" rail
- Aluminum die cast
- 160 each per case @ 47lbs



## ► Round Single Flange Wall Mount Bracket

**NW271-26** Black

**NW271-56** White

**NW271-36** Bronze

**NW271-76** Mill

- Accommodates a 1 5/8" x 2" rail
- Aluminum die cast
- 240 each per case @ 52lbs



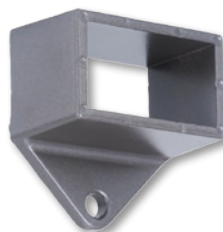
## ► 'V' Flange Wall Mount Bracket

**NW272-36** Bronze

**NW272-56** White

**NW272-76** Mill

- Accepts both bottom channel and snap plate
- 1" x 1 13/16" opening
- Aluminum die cast
- 280 each per case @ 42lbs



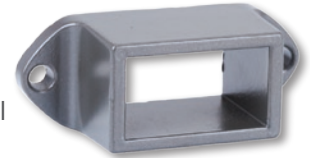
## ► Rectangular Dual Flange Wall Mount Bracket

**NW268-36** Bronze

**NW268-56** White

**NW268-76** Mill

- Accommodates a 1 7/8" x 1" rail
- Aluminum die cast
- Accepts both bottom channel and snap plate
- 210 each per case @ 50lbs



## ► Mushroom Railing End Cap

**NW269-36** Bronze

**NW269-56** White

**NW269-76** Mill

- Accommodates a 2 1/4" x 1 5/8" rail
- Aluminum die cast
- 300 each per case @ 47lbs



## ► Round Top Railing End Cap

**NW267-36** Bronze

**NW267-56** White

**NW267-76** Mill

- Accommodates a 1 3/4" x 1 1/4" rail
- Aluminum die cast
- 300 each per case @ 40lbs



## ► Ornamental - Fence & Railing Accessories

### ► Decorative Single 'O' Ring

NW237-A-MI Mill

- Used with 3/4" picket system
- 4" Outer Diameter
- 3 1/4" Inner Diameter
- 120 each per case @ 40lbs



### ► Decorative Double 'O' Ring

NW237DBL-MI Mill

- Used with 3/4" picket system
- Spacing between two rings is .770"
- 3 7/16" Outer Diameter
- 2 7/8" Inner Diameter
- 50 each per case @ 24lbs

### ► Decorative Scroll

NW241-SBL Mill

- Used with 5/8" picket system
- 3 5/8"(H) x 3 3/4"(W) x 5/8"(D)
- 160 each per case @ 42lbs



### ► Have Questions? Need Answers?

**Are your needs custom, replacement, or current stock?**

- Call Us: (813) 988-2628
- Fax Us: (866) 988-3465
- Email Us: [fence@nationwideindustries.com](mailto:fence@nationwideindustries.com)
- Visit our Web: [www.nationwideindustries.com](http://www.nationwideindustries.com)

**Contact us, and we'll show you what we can do!**



### ► Aluminum Lock Box

NW214-MI Mill

- Box is 3 3/8"(H) x 4 7/16"(W) x 2"(D)
- Welded into gate profile to accommodate traditional mortise lockset
- 50 each per case @ 29lbs

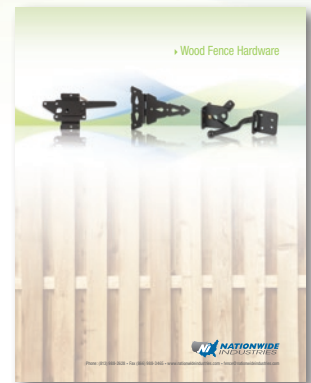




► Ask about our other Fence Hardware Catalogs



Vinyl Fence Hardware



Wood Fence Hardware



Phone: (813) 988-2628 • Fax (866) 988-3465 • [www.nationwideindustries.com](http://www.nationwideindustries.com) • [fence@nationwideindustries.com](mailto:fence@nationwideindustries.com)

OFH 10/07