

► Vinyl Fence Hardware



NATIONWIDE
INDUSTRIES

Phone: (813) 988-2628 • Fax (866) 988-3465 • www.nationwideindustries.com • fence@nationwideindustries.com

► What would your ideal supplier look like?

Would they:

- Ship from available stock the same day you order if placed before 12 noon EST
- Have ample stock in multiple warehouses
- Have an efficient & friendly customer service department
- Be a company that consistently achieves the right balance of price & quality
- Use an automotive industry-based quality control system
- Have a broad line of hardware to meet all of your hardware needs

**Nationwide Industries may be your ideal fit.
Try us and we'll show you what we can do!**

Cornerstone™ Series Hinges

* Tested to 500,000 cycles!



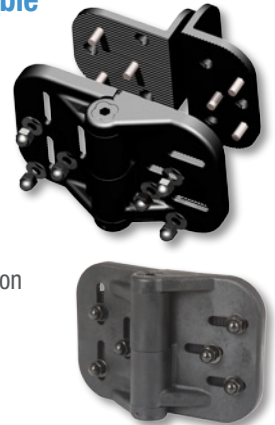
Just push down and turn to adjust spring tension.

Easy and
Convenient
Spring Tension
Adjustment!

► Cornerstone™ Fully Adjustable Self-Closing Nylon Hinge

CH300F-BK Black
CH300F-WH White

- Both flanges:
4.25"(H) x 2.88"(W) x 1.50"(D)
- Back plates allow horizontal and vertical adjustability
- Produced with durable glass-filled nylon
- .25" Allen wrench **included** for tension adjustment
- Stainless steel screws included
- 20 pair per case @ 42lbs



Patented

► Cornerstone™ Horizontally Adjustable Self-Closing Nylon Hinge

CH300H-BK Black
CH300H-WH White

- Both flanges:
4.25"(H) x 2.88"(W) x 1.25"(D)
- Produced with durable glass-filled nylon
- .25" Allen wrench **included** for tension adjustment
- Stainless steel screws included
- 20 pair per case @ 24lbs



Patented

Slotted, serated holes for horizontal holding power

► Cornerstone™ Non Adjustable Self-Closing Nylon Hinge

CH300N-BK Black
CH300N-WH White

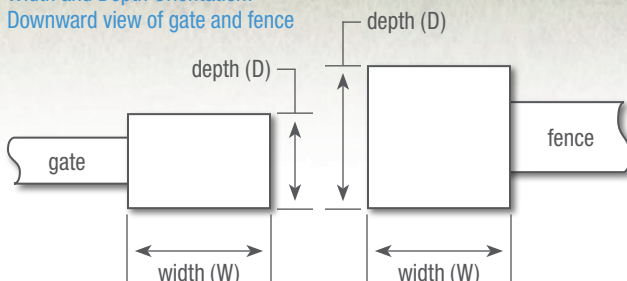
- Both flanges:
4.25"(H) x 2.88"(W) x 1.25"(D)
- Produced with durable glass-filled nylon
- .25" Allen wrench **included** for tension adjustment
- Stainless steel screws included
- 20 pair per case @ 31lbs



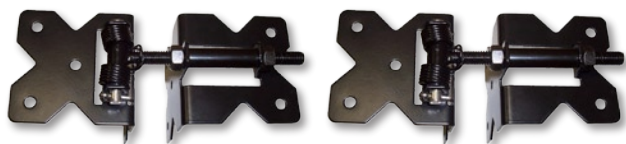
Patented

* Based upon 1 pair of hinges closing a 6'(H) x 4'(W) privacy gate.

Width and Depth Orientation:
Downward view of gate and fence



► Vinyl Fence Hinges – Self-Closing



► Adjustable Stainless Steel Hinge

Standard to Standard Self-Closing

NW38952SCR-BCP Black

NW38952SCR-WCP White

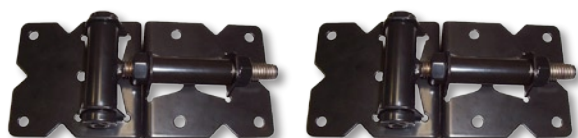
- Both flanges: 3"(H) x 3"(W) x 3"(D)
- Horizontally adjustable
- Stainless steel screws included
- 12 pair per case @ 25lbs

Standard to Narrow Self-Closing

NW38953SCR-BCP Black

NW38953SCR-WCP White

- Standard flange: 3"(H) x 3"(W) x 3"(D)
- Narrow flange: 3"(H) x 3"(W) x 1.25"(D)
- Horizontally adjustable
- Stainless steel screws included
- 12 pair per case @ 15lbs



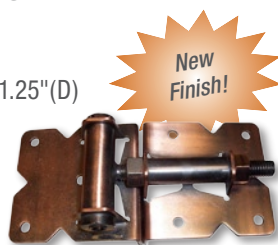
► Adjustable Stainless Steel Hinge

Narrow To Narrow Self-Closing

NW171NASC-SSB Black

NW171NASC-SSW White

- Both flanges: 3.5"(H) x 3.5"(W) x 1.25"(D)
- Horizontally adjustable
- Enclosed spring with tension adjustment
- Stainless steel screws included
- 12 pair per case @ 37lbs



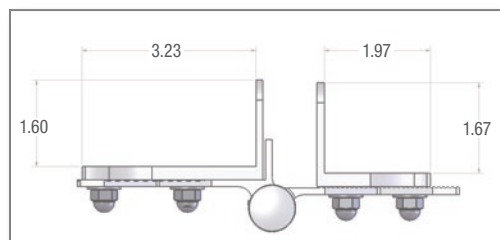
Brushed Copper Finish Available

Standard to Narrow Self-Closing

NW171NASCA-SSB Black

NW171NASCA-SSW White

- Post flange: 3.5"(H) x 3.5"(W) x 3.5"(D)
- Gate flange: 3.5"(H) x 2.75"(W) x 1.25"(D)
- Horizontally adjustable
- Enclosed spring with tension adjustment
- Stainless steel screws included
- 12 pair per case @ 42lbs



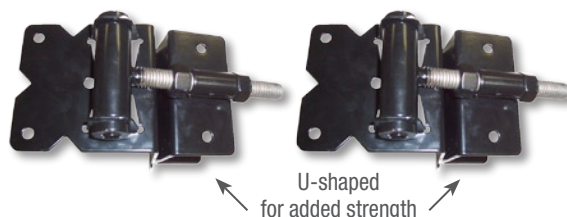
► Fully Adjustable Hinge

Self-Closing

NW093V-26 Black

NW093V-56 White

- Post flange: 5"(H) x 3.88"(W) x 1.62"(D)
- Gate flange: 5"(H) x 3"(W) x 1.62"(D)
- Aluminum leaf with Zinc die cast back plate
- Back plates allow horizontal and vertical adjustability
- Enclosed spring with tension adjustment
- 10 pair per case @ 39lbs



► Wrap Around Adjustable Stainless Steel Hinge

Self-Closing

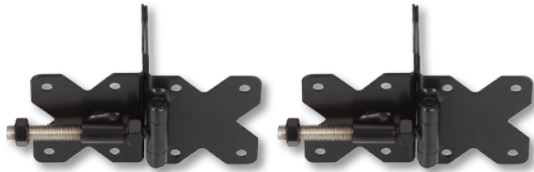
NW6082-SSB Black

- Post flange: 3.5"(H) x 3.5"(W) x 3.5"(D)
- For 1 3/4" gate frames only
- Horizontally adjustable
- Enclosed spring with tension adjustment
- 10 pair per case @ 34lbs

► Call Us: (813) 988-2628 or

► Email Us: fence@nationwideindustries.com

► Vinyl Fence Hinges – Non Self-Closing



► Adjustable Stainless Steel Hinge

Standard to Standard

NW38950NSSB Black

NW38950NSSW White

- Both flanges: 3.5" (H) x 3.25" (W) x 3.25" (D)
- Minimum gate frame or post size is 3.5" (W) x 3.5" (D)
- Horizontally adjustable
- Stainless steel screws included
- 12 pair per case @ 43lbs



► Adjustable Stainless Steel Hinge

Standard to Narrow

NW38951NSSB Black

NW38951NSSW White

- Post flange: 3.5" (H) x 3.25" (W) x 3.25" (D)
- Gate flange: 3.5" (H) x 3.25" (W) x 1.5" (D)
- Horizontally adjustable
- Stainless steel screws included
- 12 pair per case @ 38lbs

NW38951NB Black

NW38951NW White

- Same as 38951NS above but with Zinc plate steel black finish

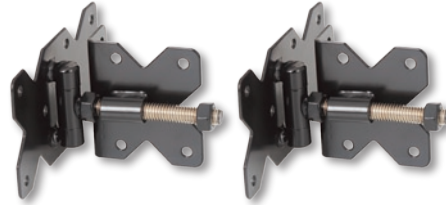


► Heavy Duty Adjustable Stainless Steel Hinge

Standard To Standard

NW38954-SSB Black

- Both flanges: 3.5" (H) x 3.12" (W) x 3.12" (D)
- Heavy Duty 5/8" threaded rod
- Horizontally adjustable
- Stainless steel screws included
- 10 pair per case @ 45lbs



► Adjustable Wall Mount Stainless Steel Hinge

NW38951NWV-SSB Black

NW38951NWV-SSW White

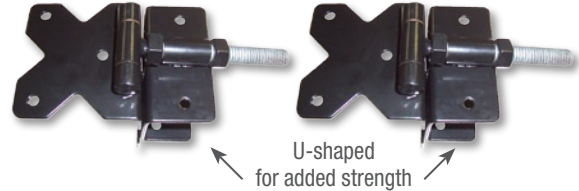
- Gate flange: 3.5" (H) x 3.25" (W) x 3.25" (D)
- Wall flange: 3.5" (H) x 6.38" (W)
- Horizontally adjustable
- Stainless steel screws included
- 12 pair per case @ 39lbs

► Stainless Steel Butterfly Hinge

NW38943-SSB Black

NW38943-SSW White

- 8" Hinge with a traditional wood hardware look
- Stainless steel screws included
- 20 pair per case @ 45lbs



► Adjustable Wrap Around Stainless Steel Hinge

NW38955-SSB Black

NW38955-SSW White

- Post flange: 3.5" (H) x 3.5" (W) x 3.5" (D)
- For 1 3/4" gate frames only
- Horizontally adjustable
- 12 pair per case @ 38lbs

► Super-Duty 3-Sided Stainless Steel Hinge

NW6056-BK Black

- Use for 5" x 5" post and fence gate **only**
- Both flanges: 3.5" (H) x 3.5" (W) x 5" (D)
- Horizontally adjustable
- Packaged with stainless thru bolts, nuts and washers
- 5 pair per case @ 38lbs

Matching latch
(NW6057-BK)
found on page 6



**Ideal for
Post & Rail
or Commercial
Applications!**

► Vinyl Fence Latches

► The Protector™

Magnetic Pool Safety Latch

NW276NE-26 Black

NW276NE-56 White

- 19.5" latch height meets pool access requirements when properly installed
- Horizontal and vertical adjustment up to 2"
- Reversible for right-hand or left-hand use
- Total latch height is 19.5"
- Easy-grip release knob
- Key cylinder is at a 45° angle for easy access
- Extruded aluminum body with glass-filled nylon components
- Packaged in heavy-duty poly bag with stainless screws
- 20 each per case @ 30lbs



► The Protector™ Jr.

Magnetic Pool Latch

NW308-26 Black

NW308-56 White

- Horizontal and vertical adjustment up to 2"
- Reversible for right-hand or left-hand use
- Total latch height is 10"
- Easy-grip release knob
- Key cylinder is at a 45° angle for easy access
- Extruded aluminum body with glass-filled nylon components
- Used for applications with taller fence profiles
- Packaged in heavy-duty poly bag with stainless screws
- 20 each per case @ 23lbs



► Have Questions? Need Answers?

Are your needs custom, replacement, or current stock?

- Call Us: (813) 988-2628
- Fax Us: (866) 988-3465
- Email Us: fence@nationwideindustries.com
- Visit our Web: www.nationwideindustries.com

Keystone Advantage™ Series

All Keystone™
Latches available
in Nylon or Metal

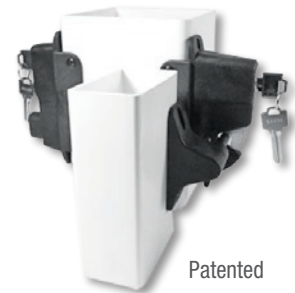


Two-Sided Lockable Latch

KLADV-P2-BK Black (Nylon)

KLADV-P2-WH White (Nylon)

- Locking feature accessible from both sides
- Reversible for right-hand or left-hand use
- Glass-filled nylon housing
- Thumb release button on one side and gravity latch lever on opposite side
- .38" Stainless steel strike bar
- Stainless steel screws included
- 20 each per case @ 23lbs



Patented

KLADV-M2-BK Black (Zinc diecast)

KLADV-M2-WH White (Zinc diecast)

- Same as KLADV-P2 but with zinc die cast housing
- 20 each per case @ 48lbs

One-Sided Lockable Latch

KLADV-P1-BK Black (Nylon)

KLADV-P1-WH White (Nylon)

- Same as KLADV-P2 above but with locking (gravity latch lever) on one side
- 20 each per case @ 17lbs

KLADV-M1-BK Black (Zinc diecast)

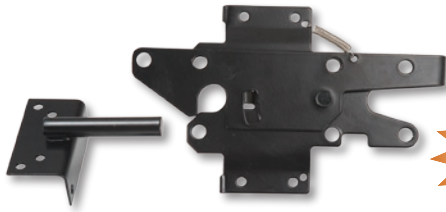
KLADV-M1-WH White (Zinc diecast)

- 20 each per case @ 31lbs



One-Sided
Lockable Latch

► **Nationwide Industries may be your ideal fit.**
Try us and we'll show you what we can do!



New
Finish!

Brushed Copper
Finish Available

► Stainless Steel Post Latch

Lockable Both Sides

NW38308NUA-SSB Black

NW38308NUA-SSW White

- Strike flange: 1.75"(H) x 1.25"(W) x 3.5"(D)
- Latch flange: 2.5"(W) x 5.5"(H) x 1.5"(D)
- Allows entry from both sides
- Mounts around corner of post and gate frame
- Pad-lockable on both sides – up to 5" post
- .63" Strike Bar
- Return spring for reversible mounting
- Stainless steel screws included
- 20 each per case @ 36lbs

NW38308NU-SSB Black

NW38308NU-SSW White

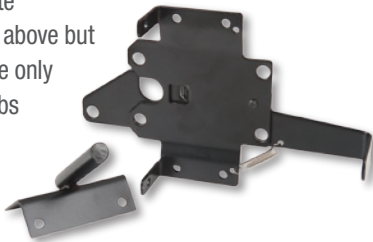
- Same as NW38308NUA above but Pad-lockable on one side only
- 20 each per case @ 35lbs

NW38308NU-B Black

NW38308NU-W White

- Same as NW38308NU above but with Zinc plate steel with Black finish
- 20 each per case @ 34lbs

Pad-lockable
One & Two
Sides!



► Contemporary Gate Latch

NW38310N-SSB Black

NW38310N-SSW White

- Strike flange: 3.12"(W) x 3.5"(H) x 1.38"(D)
- Latch flange: 1.88"(W) x 5.5"(H) x 1.5"(D)
- Mounts around corner of post and gate frame
- Pad-lockable on both sides – slide switch on latch arm
- Allows entry from both sides
- Reversible mounting (right or left handed)
- .63" Strike bar
- Stainless steel screws included
- 20 each per case @ 44lbs



► 2-Side Activated Latch

Wide Strike Flange

NW170SB-SSB Black

NW170SB-SSW White

- Strike bar flange: 3.5"(W) x 3.5"(H) x 1.38"(D)
- Allows entry from both sides
- Pad-lockable on one side
- .38" ball tipped strike bar
- Stainless steel screws included
- 40 each per case @ 36lbs



► 2-Side Activated Latch

Narrow Strike Flange

NW6068-SSB Black

NW6068-SSW White

NW6068A-SSB Black – with return spring for reversible mounting

- Strike flange is 2"(W) x 3.5"(H) x 1.38"(D)
- Allows entry from both sides
- Mounts around corner of post and gate frame
- Pad-lockable on one side
- .38" ball-tipped striker bar
- Stainless steel screws included
- 40 each per case @ 30lbs

NW6068AL-SSB Black

NW6068AL-SSW White

- Same as the other NW6068A above but with a 1 1/2" inch longer thumb latch

► **Call Us: (813) 988-2628 or**

► **Email Us: fence@nationwideindustries.com**

► **Visit Our Web: www.nationwideindustries.com**

► Vinyl Fence Latches and Drop Rods

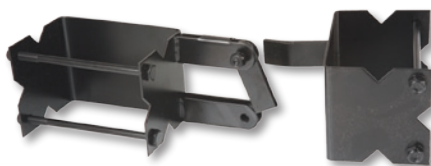


► Stainless Steel Gravity Latch

NW38210SSB Black

NW38210SSW White

- Strike flange: 3"(H) x 3"(W) x 1.25"(D)
- Latch flange: 3"(H) x 3"(W) x 1"(D)
- Reversible mounting (right or left hand)
- Mounts around corner of post and gate frame
- Pad-lockable on one side
- .38" Strike bar
- Stainless steel screws included
- 25 each per case @ 25lbs



Matching hinge
(NW6056-BK)
found on page 3

► Super-Duty 3-Sided Stainless Steel Latch

NW6057-BK Black

- For use on 5" x 5" post and fence gate **only**
- Flange: 3.5"(H) x 5"(W) x 3.38"(D)
- Reversible mounting (right or left handed)
- Pad-lockable on one side
- Packaged with stainless thru bolts, nuts and washers
- 10 each per case @ 35lbs



► Post and Rail Latch

NW175-SSB Black

- For use on 1 5/8" rail only
- Great for Horse and Cattle gates
- Stainless steel screws included
- 12 per case @ 34 lbs

Heavy Duty Spring
Loaded Strike Bar!

► Heavy Duty Drop Rods

NW38305N-24SSB 24" **Stainless steel** with Black finish
20 each per case @ 55lbs

NW38305N-24SSW **Stainless steel** with White finish
20 each per case @ 55lbs

NW38305N-36SSB 36" **Stainless steel** with Black finish
10 each per case @ 39lbs

NW38305N-36SSW **Stainless steel** with White finish
10 each per case @ 39lbs

NW38305N-36B **Zinc plate steel** with Black finish
10 each per case @ 39lbs

NW38305N-36W **Zinc plate steel** with White finish
10 each per case @ 39lbs

NW38305N-48SSB 48" **Stainless steel** with Black finish
10 each per case @ 47lbs

NW38305N-48SSW **Stainless steel** with White finish
10 each per case @ 47lbs

- 5/8" diameter
- Screws included
- Dual guides
- Pad-lockable
- Retention-ears for theft prevention



► Why partner with Nationwide Industries?

Because we:

- Ship from available stock the same day you order if placed before 12 noon EST
- Have ample stock in multiple warehouses
- Have an efficient & friendly customer service department
- Consistently achieve the right balance of price & quality
- Use an automotive industry-based quality control system
- Have a broad line of hardware to meet all of your hardware needs

Join us, and we'll show you what we can do!

► Plastic Gate Handle

NW314-BK Black

NW314-WH White

- Made with durable glass-filled nylon with UV inhibitors
- Flanges are each 1.5"(W) x 1.25"(D) for durable attachment
- Overall height is 5" and handle is .75" deep
- Very comfortable and easy to grasp
- 200 per case @ 29lbs

Also available in quantities of 50



► Plastic Gate Handle with Stop

NW6143-BK Black

NW6143-WH White

- Made with durable glass-filled nylon with UV inhibitors
- Flanges are each 2"(W) x 1.75"(D) for durable attachment
- Overall height is 4.5" and handle is 1" deep
- Very comfortable and easy to grasp
- 50 each per case



Rubber pad backing absorbs gate slamming shock, reducing latch wear.

New Product!



► 9" Stainless Steel Gate Handle

NW257-SSB Black

NW257-SSW White

- Stainless steel screws included
- 100 each per case @ 19lbs

Also available in quantities of 50



New Finish!

Brushed Copper Finish Available

► 9" Stainless Steel Gate Handle

NW38396-SSB Black

NW38396-SSW White

- Stainless steel screws included
- 200 each per @ 47lbs

Also available in quantities of 50

► **Nationwide Industries may be your ideal fit.**
Try us and we'll show you what we can do!



► **Call Us: (813) 988-2628**

► **Email Us: fence@nationwideindustries.com**

► **Visit our Web: www.nationwideindustries.com**

► Vinyl Fence and Railing Accessories



► Stainless Steel Gate Anti-Sag Kit

NW38309-SSM

- Stainless steel attachment screws included
- Cable length is 9'
- 50 each per case @ 33lbs

► Stainless Steel Self-Drilling Screws

14X1HEX-SSTEK-B Black

14X1HEX-SSTEK-W White

- #14 Hex-head by 1"
- Stainless steel self-drilling
- Each packet contains 30 screws

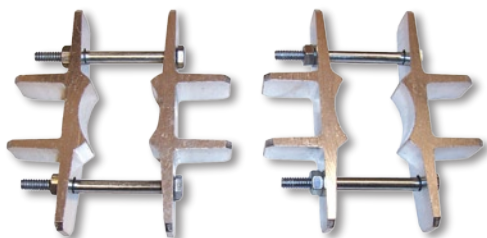


► Stainless Steel 13" Gate Spring

NW198-SSB Black

NW198-SSW White

- Stainless steel screws included
- 20 each per case @ 42lbs



► Post Mount Bracket Set

NW6011

- Adapts a 1 5/8" round post for a 4" x 4" vinyl fence post
- NW6012**
- Adapts a 1 7/8" round post for a 5" x 5" vinyl fence post
- Brackets are made of extruded aluminum
- Each kit includes 2 full brackets with four 3" Stainless steel shoulder bolts and nuts
- 50 each per case @ 33lbs

► Vinyl Railing Support Tower

NW40001-4 – 3 5/8" x 20" Zinc plated steel

NW40001-4SS – 3 5/8" x 20" Stainless steel

NW40001-5 – 4 5/8" x 20" Zinc plated steel

NW40001-5SS – 4 5/8" x 20" Stainless steel

- All towers have a wall thickness of .110"
- Will accommodate line, corner and 'T' post applications
- Includes snug-fit wedge for post thickness variations
- 8 per case @ 48lbs

3 5/8" dimensions fit a 4" vinyl post

4 5/8" dimensions fit a 5" vinyl post

NW3004 – 3 5/8" x 20" Zinc plated steel

NW3004SS – 3 5/8" x 20" Stainless steel

NW3005 – 4 5/8" x 20" Zinc plated steel

NW3005SS – 4 5/8" x 20" Stainless steel

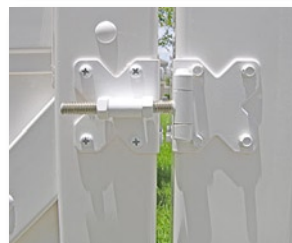
- Same as NW40001s above but with concrete anchor and adjustable leveling plate kit



► At Nationwide Industries...



We have ample stock in multiple warehouses.



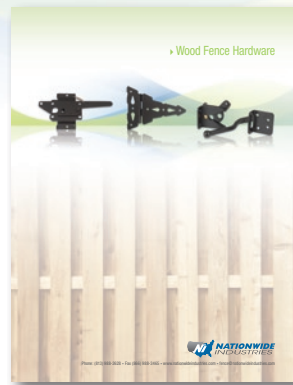
We have an efficient and friendly customer service department.



We are a company that consistently achieves the right balance of price and quality.

► Ask your sales representative about our new railing post mounts for 2008!

► Ask about our other Fence Hardware Catalogs



Wood Fence Hardware



Ornamental Fence Hardware



Phone: (813) 988-2628 • Fax (866) 988-3465 • www.nationwideindustries.com • fence@nationwideindustries.com

VFH 10/07