

# Wood Fence Hardware

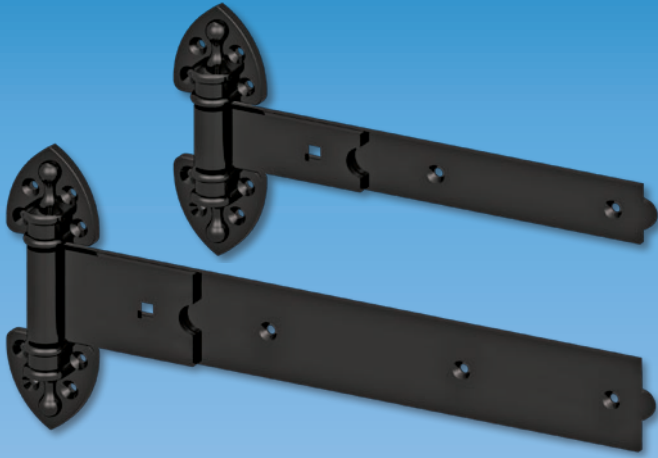
Hinges  
Latches  
Drop Rods  
Handles  
Accessories



# Wood Fence Rustic Series and Hammered Bronze

## Nationwide Industries Rustic Series

### 12", 16", 20" and 24" Hinges



#### RUSH112-BK

- ▶ 12" pair of black hinges
- ▶ 1/2" pin
- ▶ Powder coated finish
- ▶ 10 pair per case @ 59 lbs

#### RUSH116-BK

- ▶ 16" pair of black hinges
- ▶ 1/2" pin
- ▶ Powder coated finish
- ▶ 8 pair per case @ 50 lbs

#### RUSH220-BK

- ▶ 20" pair of black hinges
- ▶ 5/8" pin
- ▶ Powder coated finish
- ▶ 6 pair per case @ 55 lbs

#### RUSH224-BK

- ▶ 24" pair of black hinges
- ▶ 5/8" pin
- ▶ Powder coated finish
- ▶ 4 pair per case @ 45 lbs

\* All hinges include stainless steel screws and a **carriage bolt** with painted head

### Twisted Ring Latch



#### RUSL1-BK

- ▶ Operates from either side
- ▶ Fits gates up to 5" thick
- ▶ Powder coated finish
- ▶ 10 per case @ 20 lbs

### Hinges:

#### NW38937Q-HBZ

- ▶ See NW38937Q on page 2

#### NW38945Q-HBZ

- ▶ See NW38945Q on page 2

#### NW38944Q-HBZ

- ▶ See NW38944Q on page 4

### Latches:

#### NW38308Q-HBZ

- ▶ See NW38308Q on page 7

#### NW38310Q-HBZ

- ▶ See NW38310Q on page 7

#### NW38307-HBZ

- ▶ See NW38307 on page 7

## Hammered Bronze Hinges, Latches, Kits, Drop Rods and Handles

Improve the look and value of your whole fence  
by upgrading the finish on your hardware!



- ▶ All hardware is zinc plate steel with hammered bronze finish
- ▶ For specs and photo of hardware shown in black, please view referenced page numbers

Look for the star to  
quickly identify the  
Hammered Bronze  
hardware.



Also Available in  
Hammered Bronze

### Kits:

#### NW38948CQ-HBZ

- ▶ See NW38948CQ on page 10

#### NW38949CQ-HBZ

- ▶ See NW38949CQ on page 10

#### NW38948WQ-HBZ

- ▶ See NW38948WQ on page 10

#### NW38949W24-HBZ

- ▶ See NW38949W24 on page 10

### Drop Rods:

#### NW38305-24Q-HBZ

- ▶ See NW38305-24Q on page 11

### Handles:

#### NW38398Q-HBZ

- ▶ See NW38398Q on page 14



## 8" Ornamental 'T' Hinge

### NW38937Q

- ▶ Zinc plate steel with black finish
- ▶ 1 3/4" lag screws with black finish
- ▶ 20 pair per case @ 43 lbs

### NW38937FQ

#### with Fixed Pin

- ▶ Zinc plate steel with black finish
- ▶ 1 3/4" lag screws with black finish
- ▶ 20 pair per case @ 43 lbs

### NW38937AQ

#### Un-Assembled

- ▶ Zinc plate steel with black finish
- ▶ 1 3/4" lag screws with black finish
- ▶ 20 pair per case @ 43 lbs

### NW38937MDQ

- ▶ Zinc plate steel with black finish
- ▶ **3" thru-bolts for gate side**
- ▶ **3" lag screws for fence side**
- ▶ 20 pair per case @ 44 lbs



Also Available in  
Hammered Bronze



## 8" Ornamental Heavy Duty Self-Closing 'T' Hinge



Massive  
Spring and  
Barrel →



### NW38937HDQ

- ▶ **More Closing Power**

- ▶ Easy tension adjustment
- ▶ Easy to hold adjustment pin

## 8" Contemporary 'T' Hinge

### NW38945Q

- ▶ Zinc plate steel with black finish
- ▶ 1 3/4" lag screws with black finish
- ▶ 20 pair per case @ 54 lbs

### NW38945MDQ

- ▶ Zinc plate steel with black finish
- ▶ **3" thru-bolts for gate side**
- ▶ **3" lag screws for fence side**
- ▶ 20 pair per case @ 54 lbs

### NW38945SS

- ▶ Same as NW38945Q but in stainless steel with mill finish



Also Available in  
Hammered Bronze



## 10" Ornamental 'T' Hinge

### NW38933MDQ with Cotter-Pin

- ▶ Zinc plate steel with black finish
- ▶ **3" thru-bolts for gate side**
- ▶ **3" lag screws for fence side**
- ▶ 10 pair per case @ 44 lbs

### NW38933FMDQ with Fixed Pin

- ▶ Zinc plate steel with black finish
- ▶ **3" thru-bolts for gate side**
- ▶ **3" lag screws for fence side**
- ▶ 10 pair per case @ 44 lbs



## 10" Contemporary 'T' Hinge

### NW38947Q

- ▶ Zinc plate steel with black finish
- ▶ 1 3/4" lag screws with black finish
- ▶ 10 pair per case @ 32 lbs

### NW38947MDQ

- ▶ Zinc plate steel with black finish
- ▶ **3" thru-bolts for gate side**
- ▶ **3" lag screws for fence side**
- ▶ 10 pair per case @ 32 lbs

## 12" Ornamental 'T' Hinge

### NW38935Q

- ▶ Zinc plate steel with black finish
- ▶ 1 3/4" lag screws with black finish
- ▶ 10 pair per case @ 52 lbs

### NW38935MDQ (special order)

- ▶ Zinc plate steel with black finish
- ▶ **3" thru-bolts for gate side**
- ▶ **3" lag screws for fence side**
- ▶ 10 pair per case @ 52 lbs

## 8" Traditional 'T' Hinge

### NW38941Q

- ▶ Zinc plate steel with black finish
- ▶ 1 3/4" lag screws with black finish
- ▶ 20 pair per case @ 56 lbs

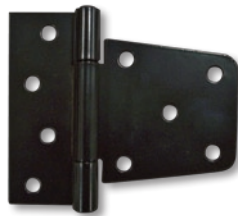


# Wood Fence Hinges

## Blunt 'T' Hinge

### NW6172-BK

- ▶ Zinc plate steel with black finish
- ▶ 1 3/4" lag screws for fence
- ▶ 1 3/4" lag screws for gate
- ▶ 20 pair per case @ 40 lbs



## 6" Universal 'T' Hinge

### NW36576/6-BQ

- ▶ Zinc plate steel with black finish
- ▶ 2 1/2" lag screws for fence
- ▶ 1 3/4" lag screws for gate
- ▶ 20 pair per case @ 34 lbs



### NW36576/6-M

- ▶ Zinc plate steel finish
- ▶ 2 1/2" lag screws for fence
- ▶ 1 3/4" lag screws for gate
- ▶ 20 pair per case @ 34 lbs

### NW36576/6-71

- ▶ Zinc plate steel finish
- ▶ Bulk-packed without screws
- ▶ 50 each per case @ 43 lbs

### NW36576/6-ZPBB (Special order only) with Brass Bushing

- ▶ Zinc plate steel with black finish
- ▶ 2 1/2" lag screws for fence
- ▶ 1 3/4" lag screws for gate
- ▶ 40 pair per case @ 59 lbs

## 8" Universal 'T' Hinge

### NW199

- ▶ Zinc plate steel with black finish
- ▶ 2 1/2" lag screws for fence
- ▶ 1 3/4" lag screws for gate
- ▶ 20 pair per case @ 42 lbs



### NW199-76 (Special order only)

- ▶ Zinc plate steel finish
- ▶ 2 1/2" lag screws for fence
- ▶ 1 3/4" lag screws for gate
- ▶ 20 pair per case @ 42 lbs

### NW199-ZPBB (Special order only) with Brass Bushing

- ▶ Zinc plate steel with black finish
- ▶ 2 1/2" lag screws for fence
- ▶ 1 3/4" lag screws for gate
- ▶ 20 pair per case @ 43 lbs

## 8" Ornamental Screw Hook & Strap Hinge



### NW38934Q

- ▶ Zinc plate steel with black finish
- ▶ 1 3/4" lag screws with black finish
- ▶ 20 pair per case @ 40 lbs

## 8" Ornamental Double Strap Hinge



### NW38936Q

- ▶ Zinc plate steel with black finish
- ▶ 1 3/4" lag screws with black finish
- ▶ 20 pair per case @ 52 lbs

## 8" Ornamental Half Strap Hinge



### NW38938Q

- ▶ Zinc plate steel with black finish
- ▶ 1 3/4" lag screws with black finish
- ▶ 20 pair per case @ 41 lbs

### NW38938FQ with Fixed Pin

- ▶ Zinc plate steel with black finish
- ▶ 1 3/4" lag screws with black finish
- ▶ 20 pair per case @ 41 lbs

### NW38938A

#### Un-Assembled

- ▶ Zinc plate steel with black finish
- ▶ 1 3/4" lag screws with black finish
- ▶ 20 pair per case @ 40 lbs

## 8" Contemporary Double Strap Hinge



### NW38944Q

- ▶ Zinc plate steel with black finish
- ▶ 1 3/4" lag screws with black finish
- ▶ 20 pair per case @ 61 lbs



Also Available in  
Hammered Bronze

### NW38944SS

- ▶ Same as NW38944Q but in stainless steel with mill finish

## 10" Contemporary Double Strap Hinge

### NW38942Q

- ▶ Zinc plate steel with black finish
- ▶ 1 3/4" lag screws with black finish
- ▶ 10 pair per case @ 35 lbs

## 8" Traditional Double Strap Hinge



### NW38940Q

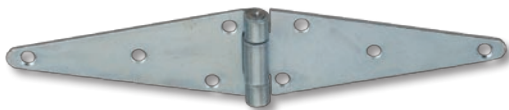
- ▶ Zinc plate steel with black finish
- ▶ 1 3/4" lag screws with black finish
- ▶ 20 pair per case @ 54 lbs

## 10" Traditional Double Strap Hinge

### NW38946Q

- ▶ Zinc plate steel with black finish
- ▶ 1 3/4" lag screws with black finish
- ▶ 10 pair per case @ 37 lbs

## 6" Universal Double Strap Hinge



### NW36579/6-M

- ▶ Zinc plate steel finish
- ▶ 2 1/2" lag screws for fence
- ▶ 1 3/4" lag screws for gate
- ▶ 20 pair per case @ 35 lbs

## 8" Contemporary Butterfly Hinge



### NW38943Q

- ▶ Zinc plate steel with black finish
- ▶ 1 3/4" lag screws with black finish
- ▶ 20 pair per case @ 54 lbs

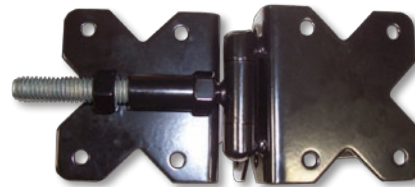
## 8" Traditional Butterfly Hinge



### NW38943T

- ▶ Zinc plate steel with black finish
- ▶ 1 3/4" lag screws with black finish
- ▶ 20 pair per case @ 54 lbs

## Adjustable Double Flange Hinge



### SV38965-BK

- ▶ Zinc plate steel with black finish
- ▶ Post flange: 3.5"(H) x 3.25"(W) x 3.25(D)
- ▶ Gate flange: 3.5"(H) x 3.25"(W) x 1.50(D)
- ▶ 12 pair per case @ 43 lbs

## Have Questions? Need Answers?

### Are your needs custom, replacement, or current stock?

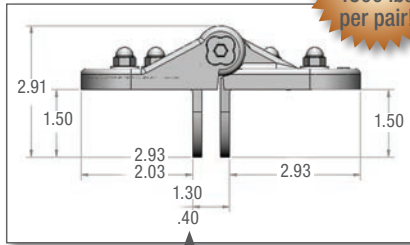
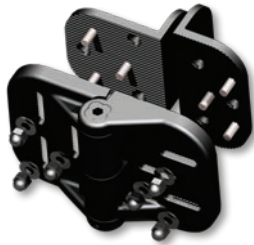
- ▶ Call Us: (813) 988-2628
- ▶ Fax Us: (866) 988-3465
- ▶ Email Us: [fence@nationwideindustries.com](mailto:fence@nationwideindustries.com)
- ▶ Visit our Web: [www.nationwideindustries.com](http://www.nationwideindustries.com)

# CornerStone® Self-Closing Nylon Hinges and Hook & Eye

## CornerStone® Series Self-Closing Nylon Hinges

Produced with durable glass-filled nylon  
1/4" Allen wrench included for tension adjustment

### CornerStone® Fully Adjustable Hinge

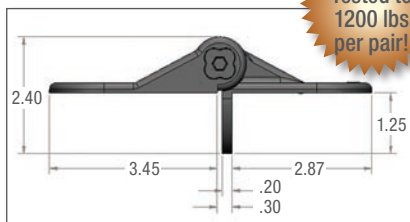


Patented

Double dimensions indicate range of adjustability

- CH300F-BK** Black w/stainless steel self-threading screws included
- CH300F-WH** White w/stainless steel self-threading screws included
- CH300F-SD-BK** Black w/stainless steel self-drilling screws included
- CH300F-SD-WH** White w/stainless steel self-drilling screws included
- ▶ Both flanges: 4.25"(H) x 2.88"(W) x 1.50"(D)
- ▶ Back plates allow horizontal and vertical adjustability
- ▶ 20 pair per case @ 42 lbs

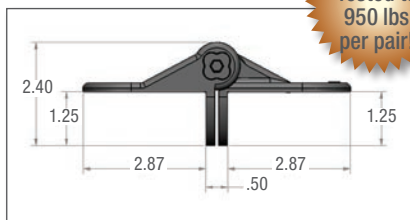
### CornerStone® Horizontally Adjustable Hinge



Slotted, serated holes for horizontal holding power  
Patented

- CH300H-BK** Black w/stainless steel self-threading screws included
- CH300H-WH** White w/stainless steel self-threading screws included
- CH300H-SD-BK** Black w/stainless steel self-drilling screws included
- CH300H-SD-WH** White w/stainless steel self-drilling screws included
- ▶ Both flanges: 4.25"(H) x 2.88"(W) x 1.25"(D)
- ▶ 20 pair per case @ 24 lbs

### CornerStone® Fixed Position 4" Hinge



- CH300N-BK** Black
- CH300N-WH** White
- ▶ Both flanges: 4.25"(H) x 2.88"(D) x 1.25"(D)
- ▶ Stainless steel screws included
- ▶ 20 pair per case @ 31 lbs

Patented

## 6" Heavy Duty Strap with 1/2" Screw Hook



### NW284-76

- ▶ Zinc plate steel finish
- ▶ 12 pair per case @ 21 lbs

## 12" Heavy Duty Strap with 5/8" Screw Hook



### NW255/38931-26

- ▶ Zinc plate steel with black finish
- ▶ 1 3/4" lag screws with black finish
- ▶ 12 pair per case @ 42 lbs

### NW255/38931-GV

- ▶ HDG finish
- ▶ 1 3/4" lag screws with HDG finish
- ▶ 12 pair per case @ 42 lbs

### NW255-71

- ▶ Zinc plate steel finish
- ▶ Without screws – bulk packed
- ▶ 50 each per case @ 42 lbs

## 1/2" X 4" Screw Hook & Eye Hinge



### NW38603

- ▶ Zinc plate steel finish
- ▶ 50 pair per case @ 56 lbs

### NW38603-GV

- ▶ HDG finish
- ▶ 50 pair per case @ 56 lbs

## 5/8" X 5" Screw Hook & Eye Hinge

### NW38931

- ▶ Zinc plate steel finish
- ▶ 20 pair per case @ 56 lbs

## Standard Gravity Latch

### NW38204Q

- ▶ Zinc plate steel with black finish
- ▶ Screws with black finish
- ▶ .38" Strike bar with ball tip
- ▶ Pad-lockable
- ▶ 50 each per case @ 27 lbs



### NW38204-76Q

- ▶ Zinc plate steel finish
- ▶ Screws with zinc plate finish
- ▶ .38" Strike bar with ball tip
- ▶ Pad-lockable
- ▶ 50 each per case @ 27 lbs

### NW38204SSM

- ▶ Same as NW38204Q but in stainless steel with mill finish

### NW38204NC-76

#### with Cable

- ▶ Zinc plate steel finish
- ▶ Screws with zinc plate finish
- ▶ With 13" cable, clip and o-ring for access on opposite side of fence
- ▶ .38" Strike bar with ball tip
- ▶ Pad-lockable
- ▶ 50 each per case @ 27 lbs

## Standard Gravity Latch with Floating Bar



### NW38203Q

- ▶ Zinc plate steel with black finish
- ▶ Screws with black finish
- ▶ .38" Strike Bar with ball tip
- ▶ Pad-lockable
- ▶ 50 each per case @ 27 lbs

## Heavy Duty Gravity Latch



### NW38338/R

- ▶ Zinc plate steel with black finish
- ▶ Screws with black finish
- ▶ .48" Strike bar with 90° bend
- ▶ Pad-lockable
- ▶ 20 each per case @ 28 lbs

### NW38338A/R-26

#### with Cable

- ▶ Zinc plate steel with black finish
- ▶ Screws with black finish
- ▶ With 13" cable, clip and o-ring for access on opposite side of fence
- ▶ .48" Strike bar with 90° bend
- ▶ Pad-lockable
- ▶ 20 each per case @ 30 lbs

## Heavy Duty Gravity Latch with Floating Bar



### NW38340Q

- ▶ Zinc plate steel black finish
- ▶ Screws with black finish
- ▶ .48" Strike bar
- ▶ Pad-lockable
- ▶ 25 each per case @ 42 lbs

### NW38340-M

- ▶ Same as NW38340Q but with zinc plate steel finish

### NW38340-CABLE

#### with Stainless Pull Cable

- ▶ Zinc plate steel black finish
- ▶ Screws with zinc plate finish
- ▶ .48" Strike bar
- ▶ Pad-lockable
- ▶ 25 each per case @ 42 lbs

Email Us: [fence@nationwideindustries.com](mailto:fence@nationwideindustries.com)

Call Us: (813) 988-2628



# Wood Fence Latches

## 90° Strike Gravity Latch



### NW38204AQ

- ▶ Zinc plate steel with black finish
- ▶ Screws with black finish
- ▶ .38" Strike bar with 90° bend and ball tip
- ▶ Pad-lockable
- ▶ 50 each per case @ 28 lbs

## Standard Post Latch

### NW38308Q

- ▶ Zinc plate steel with black finish
- ▶ Screws with black finish
- ▶ Spring activated release lever
- ▶ Two-sided entry
- ▶ Reversible (right or left handed)
- ▶ Pad-lockable on one side only
- ▶ 20 each per case @ 33 lbs



Also Available in  
Hammered Bronze

### NW38308SS

- ▶ Same as NW38308Q but in stainless steel with mill finish

### NW38308NUA-Q

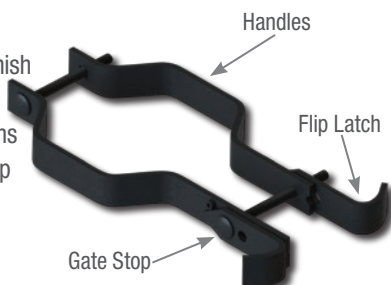
- ▶ Zinc plate steel with black finish
- ▶ Screws with black finish
- ▶ Spring activated release lever
- ▶ Two-sided entry
- ▶ Reversible (right or left handed)
- ▶ Pad-lockable on two sides
- ▶ Bent handle design
- ▶ 20 each per case @ 33 lbs



## Fork Latch Kit with Handle

### NW6185-BK

- ▶ Zinc plate steel with black finish
- ▶ Simple to use latch
- ▶ Avoids most sagging problems
- ▶ Built-in handles and gate stop
- ▶ 20 each per case @ 44 lbs



## Contemporary Post Latch



### NW38310Q

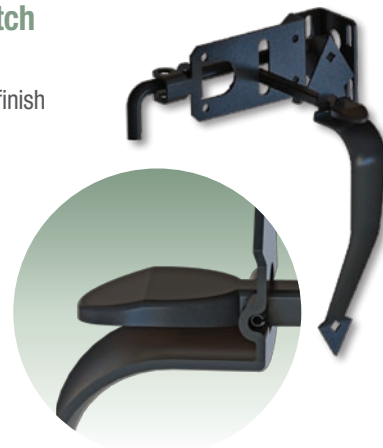
- ▶ Zinc plate steel with black finish
- ▶ Screws with black finish
- ▶ 9" Gate handle
- ▶ Slide-switch lock on opposite side
- ▶ Pad-lockable on both sides
- ▶ 20 each per case @ 43 lbs

Also Available in  
Hammered Bronze

## Round Bar Thumb Latch

### NW283-26

- ▶ Zinc plate steel with black finish
- ▶ Screws with black finish
- ▶ 9" Gate handle
- ▶ Round locking lever bar
- ▶ Pad-lockable
- ▶ 25 each per case @ 38 lbs



Improved and designed  
to avoid falling out!

## Ornamental Thumb Latch Kit

### NW38307 - 6" Lever

### NW38306A - 7" Lever

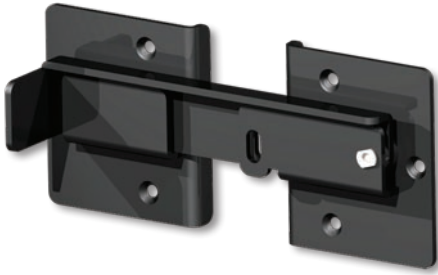
- ▶ Zinc plate steel with black finish
- ▶ Screws with black finish
- ▶ 9" Gate handle
- ▶ Locking lever bar is 'flat'
- ▶ 25 each per case @ 37 lbs



Also Available in  
Hammered Bronze

Improved and designed  
to avoid falling out!





## Flip Latch

**NW6169**

- ▶ Commercial grade
- ▶ Great for dumpster use
- ▶ Pad-lockable
- ▶ Zinc plate steel with black powder coated finish
- ▶ Stainless steel through-bolt hardware included
- ▶ 10 each per case @ 37 lbs

## Slide-Bar Latch



**NW38339Q**

- ▶ Zinc plate steel with black finish
- ▶ Screws with black finish
- ▶ 3" Throughbolts for latch
- ▶ 1" Screws for keeper
- ▶ Pad-lockable
- ▶ 60 each per case @ 42 lbs

## Round Rail Loop Latch

**NW38301Q**

- ▶ Zinc plate steel finish
- ▶ Screws with HDG finish
- ▶ 60 each case @ 43 lbs



## Split Rail Loop Latch

**NW38302Q**

- ▶ Zinc plate steel finish
- ▶ Screws with HDG finish
- ▶ 60 each per case @ 43 lbs



## All-Purpose Latch Kit



**NW38341-26**

- ▶ Zinc plate steel with black finish
- ▶ Screws with black finish
- ▶ 20 each per case @ 36 lbs

**NW38341-GV**

- ▶ HDG finish
- ▶ Screws with HDG finish
- ▶ 20 each per case @ 36 lbs

\* All kits contain gravity latch with cable



**NW-S-Latch-ZP**

- ▶ Zinc plate steel finish
- ▶ Screws with zinc plate finish
- ▶ 20 each per case @ 36 lbs

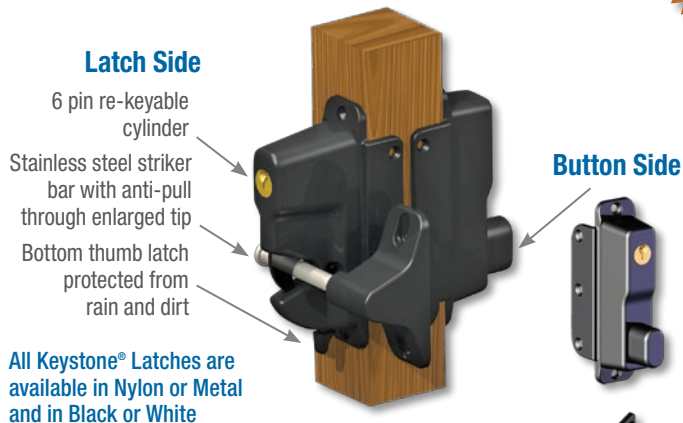
Contains same "U" shape striker bar, "U" shape staple and handle as the All Purpose Latch above. Does not include the gravity latch with cable but instead includes a flat stake keeper.

# Wood Fence Latches

## Keystone Advantage™ Series - Patented

Heavy Duty Design with Weather Resistant  
Glass-Filled Nylon Construction

Ltd  
**LIFETIME**  
Warranty!



### Two-Sided Lockable Latch

#### KLADV-P2-BK Black (Nylon)

- ▶ Locking feature accessible from both sides
- ▶ Reversible for right-hand or left-hand use
- ▶ Glass-filled nylon housing
- ▶ Thumb release button on one side, gravity latch lever on opposite side
- ▶ Stainless steel screws included
- ▶ 20 each per case @ 23 lbs

All Keystone® Advantage 2-Sided Latches are packed with a durable Plastic Marking Template for installation.

#### KLADV-M2-BK Black (Zinc diecast)

- ▶ Same as KLADV-P2 but with zinc die cast housing
- ▶ 20 each per case @ 48 lbs



### One-Sided Lockable Latch

#### KLADV-P1-BK Black

- ▶ Same as KLADV-P2 above but with locking (gravity latch lever) on one side
- ▶ 20 each per case @ 17 lbs

#### KLADV-M1-BK Black (Zinc diecast)

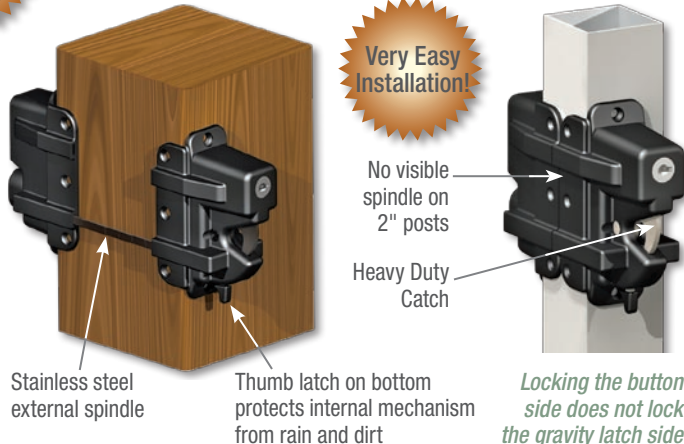
- ▶ 20 each per case @ 31 lbs



## The Keystone® X-eXternal Mount Latch

Best Stainless Steel External Spindle Design  
in the Industry - Patent Pending

Very Easy  
Installation!



No need to drill spindle holes!

### Two-Sided

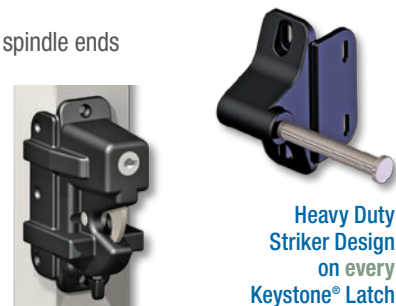
#### KLX-P2-BK Black (Nylon)

- ▶ Marked in 1/2" increments for quick, easy and accurate fitting to post sizes 2" - 5"
- ▶ Flat design safely encloses spindle ends
- ▶ 20 each per case @ 22 lbs

### One-Sided

#### KLX-P1-BK Black (Nylon)

- ▶ Features Latch only
- ▶ 20 each per case @ 15 lbs



### For Thicker Posts

#### KLX-Spindle-10

- ▶ Longer spindle for gate posts over 5" thick

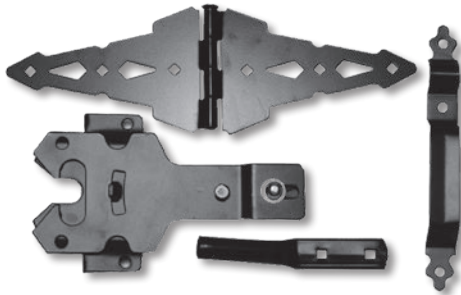
Patent Pending

### Ordering Information:

Number	Quantity	Weight
MANTA-L-BK	12 per box	21 lbs
MANTA-L-WH	12 per box	21 lbs

# Wood Gate Kits and Gate Wheels

## Contemporary Walk Gate Kit



### NW38948CQ

- ▶ Zinc plate steel with black finish
- ▶ Screws with black finish
- ▶ Includes: pair of 8" double strap hinges, post latch and 9" handle
- ▶ 10 kits per case @ 53 lbs



Also Available in  
Hammered Bronze

## Contemporary Drive Gate Kit

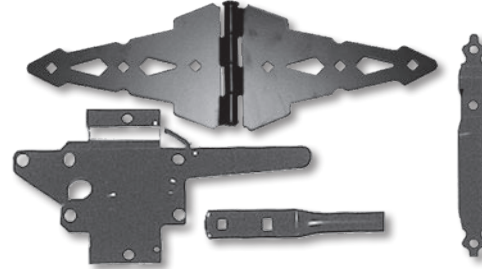
### NW38949CQ

- ▶ Same as NW38948CQ kit with an additional 24" drop rod and pair of hinges (includes 2 pair of hinges)
- ▶ 6 kits per case @ 63 lbs



Also Available in  
Hammered Bronze

## Western Walk Gate Kit



### NW38948WQ

- ▶ Zinc plate steel with black finish
- ▶ Screws with black finish
- ▶ Includes: pair of 8" double strap hinges, post latch with return spring and 9" handle
- ▶ 10 kits per case @ 51 lbs



Also Available in  
Hammered Bronze

## Western Drive Gate Kit

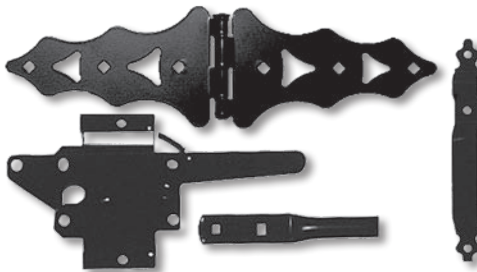
### NW38949W24

- ▶ Same as NW38948WQ kit with an additional 24" drop rod and pair of hinges (includes 2 pair of hinges)
- ▶ 6 kits per case @ 62 lbs



Also Available in  
Hammered Bronze

## Traditional Walk Gate Kit



### NW38948Q

- ▶ Zinc plate steel with black finish
- ▶ Screws with black finish
- ▶ Includes: pair of 8" double strap hinges, post latch with return spring and 9" handle
- ▶ 10 kits per case @ 47 lbs

## Traditional Drive Gate Kit

### NW38949Q

- ▶ Same as NW38948Q kit with an additional 24" drop rod and pair of hinges (includes 2 pair of hinges)
- ▶ 6 kits per case @ 58 lbs

## Gate Wheels

### GW2-BK Black (For Wood Gates)

- ▶ Zinc plated steel with powder-coated finish
- ▶ Composite wheel designed for rougher uneven surfaces and large temperature ranges
- ▶ Swivel design for ease of use
- ▶ Easily reversible for use on left or right-handed gates
- ▶ Attaches easily
- ▶ Nationwide's V-notch™ styling
- ▶ May be used on any flat surface
- ▶ Lag screws included
- ▶ 10 each per case @ 38 lbs



GW2-BK



GW1-SS-BK Black (Stainless Steel Design for Vinyl Gates)

- ▶ 10 each per case @ 29 lbs



GW3-BK Black (For Chain Link Gates)

- ▶ 10 each per case @ 46 lbs



# Wood Gate Drop Rods and Caps

## Heavy Duty Drop Rods



24" Available in  
Hammered Bronze

- |                           |     |   |
|---------------------------|-----|---|
| <b>NW38305-18Q</b>        | 18" | <b>Zinc plate steel</b> with Black finish |
| 20 each per case @ 36 lbs |     |   |
| <b>NW38305-18/ZP</b>      | 18" | <b>Zinc plate steel- unpainted</b>        |
| 20 each per case @ 36 lbs |     |   |
| <b>NW38305-24Q</b>        | 24" | <b>Zinc plate steel</b> Black finish      |
| 20 each per case @ 44 lbs |     |   |
| <b>NW38305/24-76Q</b>     |     | <b>Zinc plate steel - unpainted</b>       |
| 20 each per case @ 44 lbs |     |   |
| <b>NW38305-24SS</b>       |     | <b>Stainless steel - unpainted</b>        |
| 20 each per case @ 44 lbs |     |   |
| <b>NW38305-24SSB</b>      |     | <b>Stainless steel</b> with Black finish  |
| 20 each per case @ 44 lbs |     |   |
| <b>NW38305-24SSW</b>      |     | <b>Stainless steel</b> with White finish  |
| 20 each per case @ 44 lbs |     |   |
| <b>NW38305-36Q</b>        | 36" | <b>Zinc plate steel</b> with Black finish |
| 20 each per case @ 64 lbs |     |   |
| <b>NW38305-48Q</b>        | 48" | <b>Zinc plate steel</b> with Black finish |
| 10 each per case @ 41 lbs |     |   |



- ▶ 5/8" diameter
- ▶ Screws included
- ▶ Dual guides
- ▶ Pad-lockable
- ▶ Retention-ears for theft prevention



## Drop Rods with Holder

- NW38305H-24Q**  
**NW38305H-36Q**  
**NW38305H-48Q**

- ▶ No locking nibs
- ▶ Includes holder for "up" position
- ▶ Special Order - minimum quantity 100 per height



## Copper Plated Stainless Steel Cap

A durable alternative that combines stainless steel with the look of copper.

### NW6180-44-CP

- ▶ Fits a 4 x 4 post measuring 3 1/2" square
- ▶ Glues on to post
- ▶ 50 per case @ 6 lbs



## Plastic Caps

### 4" Wood Post Plastic Cap

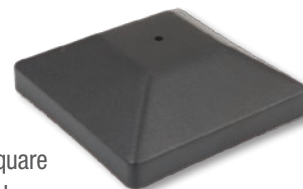
#### NW287-21

- ▶ Fits a 4 x 4 post measuring 3 5/8" square
- ▶ Made of durable HDPE plastic in black
- ▶ Logo option available (minimum quantity required)
- ▶ Also available without top hole (minimum quantity required)
- ▶ 500 each per case @ 37 lbs

### 6" Wood Post Plastic Cap

#### NW298-21

- ▶ Fits a 6 x 6 post measuring 5 3/4" square
- ▶ Made of durable HDPE plastic in black
- ▶ Logo option available (minimum quantity required)
- ▶ Also available without top hole (minimum quantity required)
- ▶ 200 each per case @ 35 lbs



## Have Questions? Need Answers?

Are your needs custom, replacement, or current stock?

- ▶ Call Us: (813) 988-2628
- ▶ Fax Us: (866) 988-3465
- ▶ Email Us: [fence@nationwideindustries.com](mailto:fence@nationwideindustries.com)
- ▶ Visit our Web: [www.nationwideindustries.com](http://www.nationwideindustries.com)

# Premium Caps for Wood Posts

## Miter-less Wood Caps

These slip-over, Miter-less wood caps are made from a single solid block of mahogany wood. Eliminating the miter joints has solved the age old problem of post caps splitting at the corners. By making the cap out of one solid piece of wood, it has eliminated the need for any glue or staples to hold the cap together.

Made From  
High Quality  
MAHOGANY  
Wood

## Traditional

### WPC-312-TRD

- Fits a standard 4 x 4 post measuring 3 1/2" square
- 45 per case @ 35 lbs

### WPC-334-TRD

- Fits a 4 x 4 post measuring 3 3/4" square
- 45 per case @ 35 lbs



## Pyramid

### WPC-312-PYR

- Fits a standard 4 x 4 post measuring 3 1/2" square
- 45 per case @ 35 lbs

### WPC-334-PYR

- Fits a 4 x 4 post measuring 3 3/4" square
- 45 per case @ 35 lbs



## New England

### WPC-312-NWENG

- Fits a standard 4 x 4 post measuring 3 1/2" square
- 45 per case @ 35 lbs

### WPC-334-NWENG

- Fits a 4 x 4 post measuring 3 3/4" square
- 45 per case @ 35 lbs

### WPC-534-NWENG

- Fits a 6 x 6 post measuring 5 1/2 to 5 3/4" square
- 20 per case @ 45 lbs



Guaranteed  
NOT to  
Separate  
at Corners



theirs



ours

## Copper and Stainless Steel Caps

The 20 gauge copper post caps are made of 100% copper and have a natural look that will patina to a green color over time. The stainless steel caps are 20 gauge stainless steel. The caps will fit 4 X 4 and 6 X 6 posts and include 2 screws for mounting.

## Copper

### WPC-312-COPP

- Fits a standard 4 x 4 post measuring 3 1/2" square
- 25 per case @ 6 lbs

### WPC-534-COPP

- Fits a 6 x 6 post measuring 5 1/2 to 5 3/4" square
- 25 per case @ 11 lbs



## Stainless Steel

### WPC-312-SS

- Fits a standard 4 x 4 post measuring 3 1/2" square
- 25 per case @ 6 lbs

### WPC-534-SS

- Fits a 6 x 6 post measuring 5 1/2 to 5 3/4" square
- 25 per case @ 11 lbs



## Metal-Wood Combination

### 4 X 4 Post Size Only

- Order a copper or stainless steel cap and a Traditional 4 X 4 Miter-less wood cap for a metal-wood combination



WPC-312-COPP  
WPC-312-TRD



WPC-312-SS  
WPC-312-TRD

## True Size Caps

### For 4", 5" and 6" True Post Sizes, Special Order

WPC-400-NWENG - for 4"

WPC-500-PYR - for 5"

WPC-600-NWENG - for 6"

- Contact Customer Service for minimum quantities and lead time

# Bumpers and Braces

## Nylon Gate Handle with Bumper

**NW6143S-BK** Black

**NW6143S-WH** White

- ▶ Made with durable glass-filled nylon with UV inhibitors
- ▶ Flanges are each 2"(W) x 1.75"(D) for durable attachment
- ▶ Overall height is 4.5" and handle is 1" deep
- ▶ Very comfortable and easy to grasp
- ▶ Stainless steel screws included
- ▶ 50 each per case @ 25 lbs
- ▶ Also available in quantities of 10

**Avoids Damage!**

Rubber pad backing absorbs gate slamming shock, reducing latch wear



## Nylon Gate Bumper

**NW6186-SD-BK**

- ▶ Made with durable glass-filled nylon with UV inhibitors
- ▶ Flanges are each 2"(W) x 1.75"(D) for durable attachment
- ▶ Overall height is 4.5"
- ▶ Stainless steel screws included
- ▶ 50 each per case @ 22 lbs
- ▶ Also available in quantities of 10

**Avoids Damage!**



## Hydraulic Gate Closers



**GC2-BK** Black

▶ **GC2-WH** White

- ▶ Works with gates up to 125 lbs
- ▶ Works with gates widths up to 54"
- ▶ Adjustable closing speed and adjustable latching speed
- ▶ 90° hold open feature
- ▶ Maximum opening of 90°
- ▶ Powder coated steel
- ▶ 12 each per case @ 30 lbs

**GC1-BK** Black

- ▶ Works with gates up to 150 lbs
- ▶ Works with gates widths up to 54"
- ▶ Adjustable closing speed
- ▶ 90° hold open feature
- ▶ Powder coated steel
- ▶ 8 each per case @ 43 lbs



## Gate Braces for Vinyl and Wood Fences

**NW6132-BK** Black or **NW6132-WH** White

- ▶ Zinc plated steel construction
- ▶ Available in powder-coated black or white
- ▶ Fits 4' x 4' to 6' x 6' gates
- ▶ 10 per case @ 54 lbs



**The Cost-effective Brace that Works!**

**Sturdy Attachment Brackets**



**Adjustable**

**Guards Against Sagging and Warping!**

**Visit our Web: [www.nationwideindustries.com](http://www.nationwideindustries.com)**



# Wood Fence Handles and Accessories

## 6" Standard Gate Handle

**NW257-26Q**

- ▶ Zinc plate steel with black finish
  - ▶ Screws with black finish
  - ▶ 100 each per case @ 19 lbs
- Also available in quantities of 50



Also Available in  
Hammered Bronze

## 9" Standard Gate Handle

**NW38398Q**

- ▶ Zinc plate steel with black finish
  - ▶ Screws with black finish
  - ▶ 100 each per case @ 31 lbs
- Also available in quantities of 50



## 9" Ornamental Gate Handle

**NW38396Q**

- ▶ Zinc plate steel with black finish
  - ▶ Screws with black finish
  - ▶ Does Not Match and fits the handle from the NW38307 Thumb Latch Kit
  - ▶ 100 each per case @ 43 lbs
- Also available in quantities of 50



## 9" Ornamental Gate Handle

**NW38307HANDLE**

- ▶ Zinc plate steel with black finish
  - ▶ Screws with black finish
  - ▶ **Matches and fits the handle from the NW38307 Thumb Latch Kit**
  - ▶ 100 each per case @ 43 lbs
- Also available in quantities of 50



## Nylon Gate Handle

**NW314S-BK Black**

**NW314S-WH White**

- ▶ Made with durable glass-filled nylon with UV inhibitors
  - ▶ Flanges are each 1.5"(W) x 1.25"(D) for durable attachment
  - ▶ Overall height is 5" and handle is .75" deep
  - ▶ Very comfortable and easy to grasp
  - ▶ Stainless steel screws included
  - ▶ 200 each per case @ 29 lbs
- Also available in quantities of 50



## 2" X 4" Rail Mounting Bracket – Steel

**NW288-MI**

- ▶ Zinc plate steel finish
- ▶ 400 each per case @ 45 lbs

**NW288-GV**

- ▶ HDG finish
- ▶ 400 each per case @ 45 lbs



## 10" Gate Spring

**NW38304-PQ**

- ▶ Zinc plate steel with black finish
- ▶ Screws with black finish
- ▶ Adjustable tension
- ▶ 40 each per case @ 53 lbs



## 5/16" X 2" Lag Screw

**NW5162**

- ▶ Zinc plate steel with black finish
- ▶ 1200 per case @ 27 lbs

**NW5162Q**

- ▶ HDG steel with black finish
- ▶ 1200 each per case @ 46 lbs



## Gate Anti-Sag Kit – Steel

**NW38309Q**

- ▶ Zinc plate steel finish
- ▶ Screws with zinc plate finish
- ▶ Cable length is 9'
- ▶ 50 kits per case @ 31 lbs



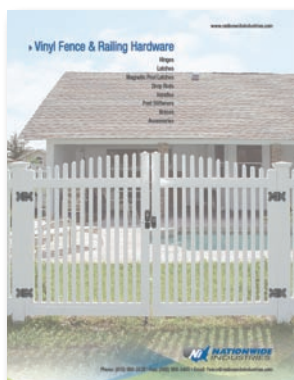
**NW38309SSM**

- ▶ Same as NW38309Q but in stainless steel with mill finish

Ask about our other Fence Hardware Catalogs



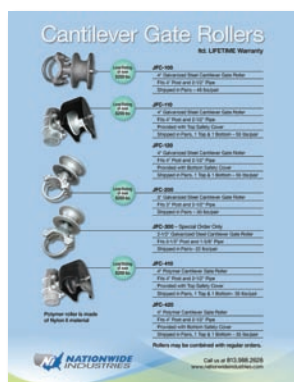
**Innovative Fence and Railing Hardware**



**Vinyl Fence Hardware**



**Ornamental Fence Hardware**



**Cantilever Gate Rollers and Accessories**



**Keyless Gate Locks**



**Chain Link Gate Hardware**

**CornerStone®**  
The Million Cycle  
Self-Closing Nylon Hinges

**Keystone® Advantage**  
Heavy Duty  
Key-Lockable Latches

**Keystone® X**  
eXternal Mount  
Key-Lockable Latches

**OrnaMAG™**  
Magnetic  
Metal Latches

**Manta™**  
Magnetic  
Nylon Latches

**AquaLatch™**  
Magnetic Pool  
Safety Latches

**V-Notch™**  
Hinges and  
Latches



**VINYL FENCE, DECK AND RAILING  
MANUFACTURERS ASSOCIATION**  
A Division of the American Fence Association

